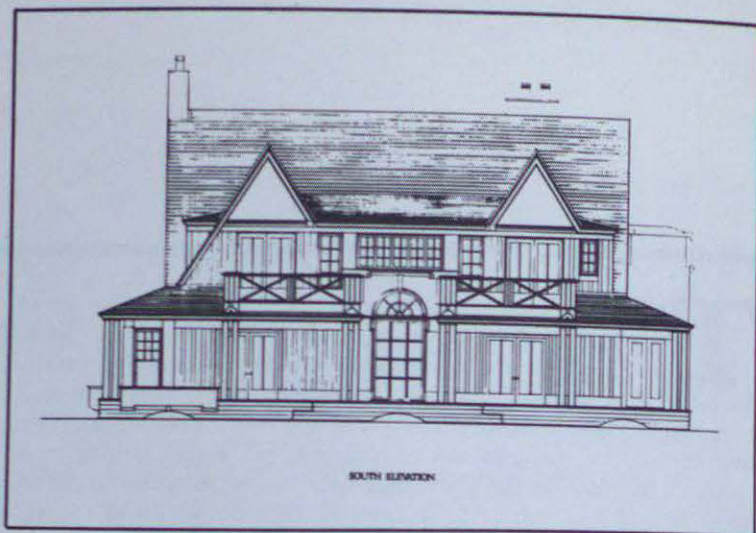


FISHER HOUSE

LAKE CORNU, QUEBEC

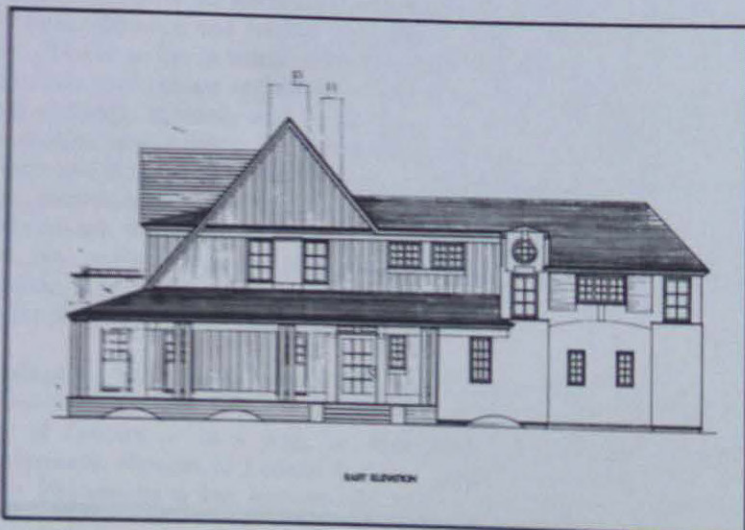


This page: View from the south
View from the east

Opposite: Sun-room doors
Window at west gable end

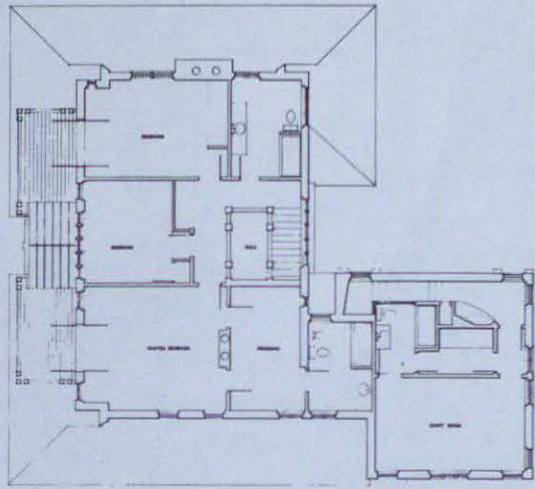
The Fisher House is set amid carefully kept lawns and flower beds on a rolling and meticulously tended property which juts out into Lake Memphramagog. Its sprawling veranda and large gables respond in spirit to the decidedly English flavour of both its surroundings and the original Victorian country home which was destroyed by fire a few years ago.

In addition to large generous rooms for entertainment and relaxation (with 4200 square feet of floor space), the new house provides the Fishers with the many rooms which they and their visiting children or guests require. Punctuated by a two-storey stair hall, a large central corridor orients all major rooms southward towards the gardens beyond which like the lake.

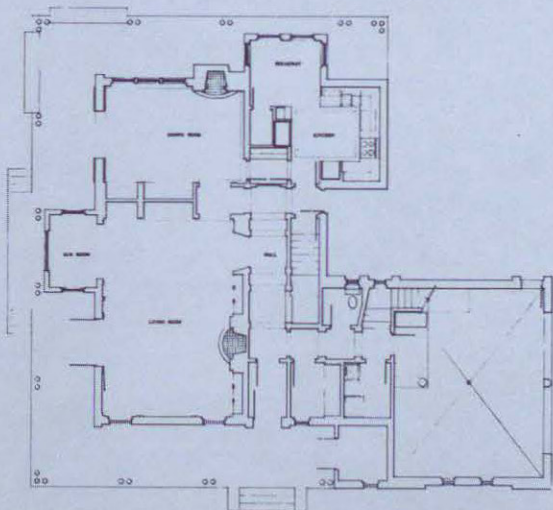


PETER ROSE

ARCHITECT



FIRST FLOOR



SECOND FLOOR

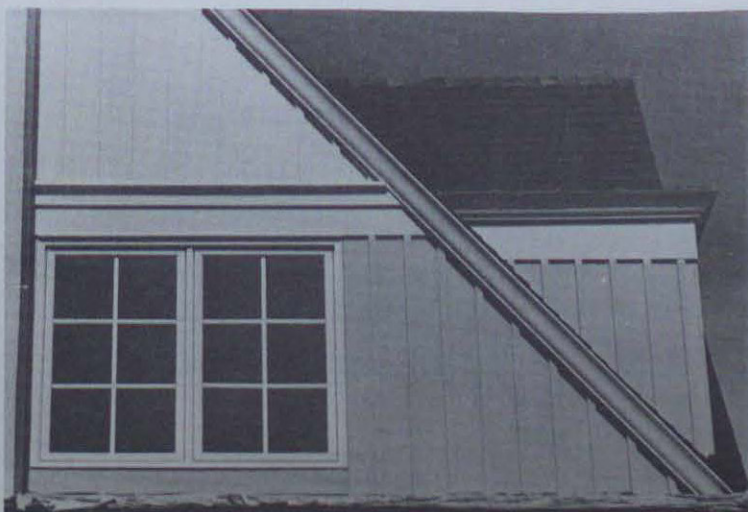


Architects: Peter Rose with William Mark Pimlott

General Contractor: Sherma Construction, Magog

Photography: Peter Rose and Carlo Molino

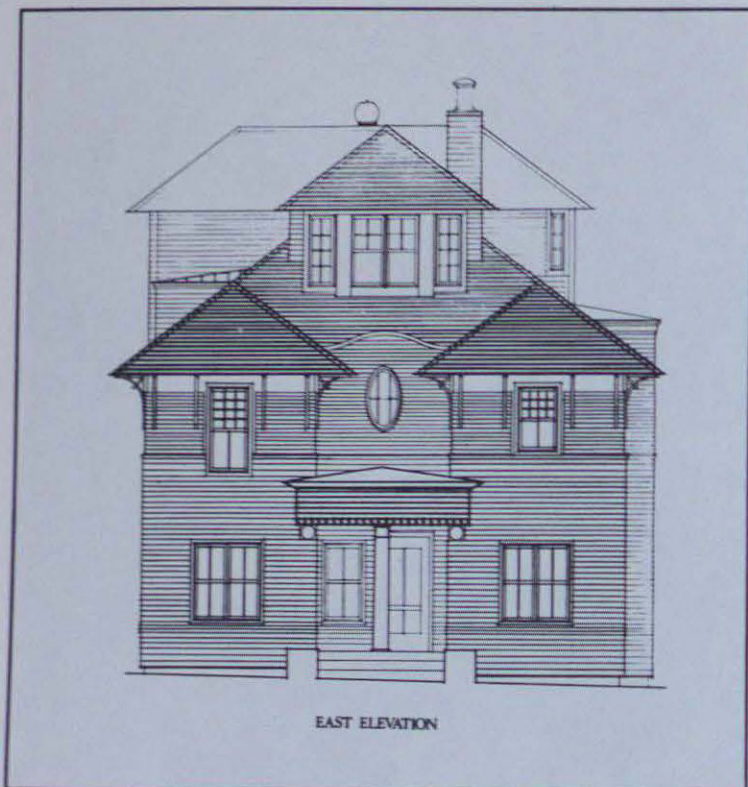
Drawings from the architect's office



WEST ELEVATION

RIBKOFF HOUSE

AUSTIN, QUEBEC

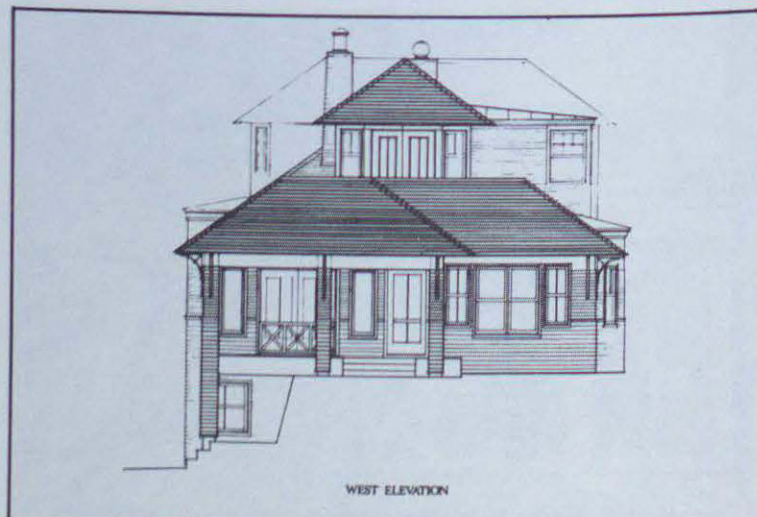


With the adjacent boathouse and granite cliffs, the Ribkoff House creates a formal courtyard in the midst of the Laurentian landscape. The house is situated in such a way as to provide intimate view of the stone cliffs and nearby forests and wider vistas over the lake and surrounding mountains.

Whereas the order created here alludes to a certain sense of ceremony, the house and the boathouse were designed in a picturesque fashion appropriate to the long tradition of country houses. Furthermore, the rich architectural language of the country house is reflected in the use of wood as a finishing material both inside and out, as well as in the specific development of details.

Architects: Peter Rose with Erich Marosi and Ron Keavs
General Contractor: Pierre Travailland and Construction,
 Saint-Saveur

Photography: Peter Rose and Carlo Molino
Drawings from the architect's office



PETER ROSE

ARCHITECT

