

Murdoch Laing Design Competition

McGill University School of Architecture

Winning Project: Hal Ingberg

Summer 1983

Program Extracts

"\$1,300., for the design of a medium cost city house, established by the late Mrs. Florence B. Laing in memory of her son (formerly a student in the School of Architecture) who was killed at Courcelette in 1916 while serving with the 24th Canadian infantry Battalion. Awarded in a competition held during the summer prior to entering the B.Arch. program."

Assignment:

The design of a double house for two families who wish to live together in the historic precinct of Montreal. One section of the building is to be occupied by an architect, his wife and his three children, aged 11, 14 and 16, respectively. The other section will be occupied by his parents, who have recently come from Italy to settle in Canada.

Privacy from the street and between dwelling units must be provided. The designer must bear in mind that in the event that this cooperative arrangement between families cannot be continued, the parents' unit will be rented out, and the limited common facilities will be appropriated by the owner.

The building will be owned by the younger couple. Both parts are to function as totally independent units. The only facility common to both units shall be an internal outdoor space, in the form of a court garden, a roof garden or an open atrium and a basement area.

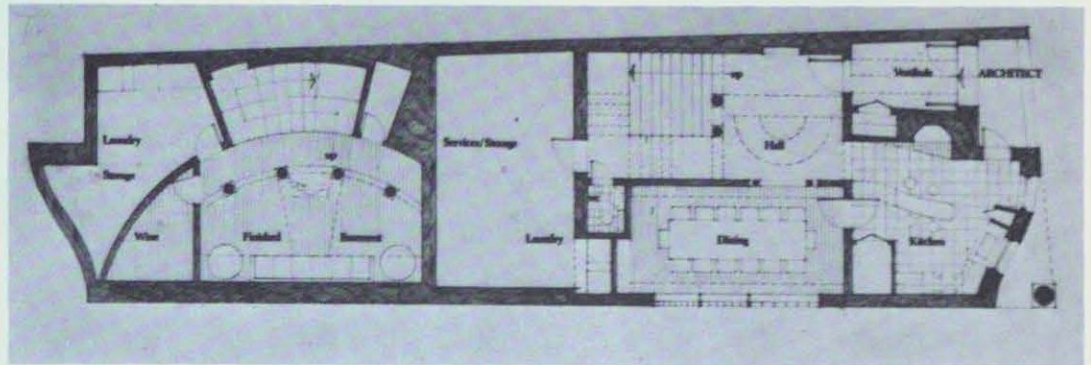
The Site:

An empty lot on the east side of Rue Saint Gabriel, between Rue St. Paul and Rue de la Commune. The lot measures approximately 6.5 m. by 27 m. and has three sides facing streets. The land slopes down 3.2 m. towards the harbour.

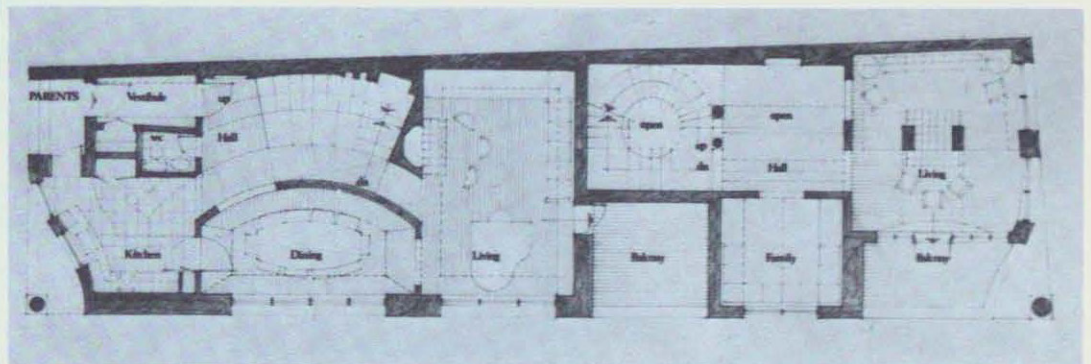
Urban Design Considerations:

The building site must be seen as an integral part of a city block situated within a neighbourhood that is to be rehabilitated and possibly transformed into a new entity. The building must express its strong visual relationship with its immediate physical context, without mimicking its neighbours. It must express its contemporary function, and despite the strong contextual requirements, it must be seen as a modern architectural statement.

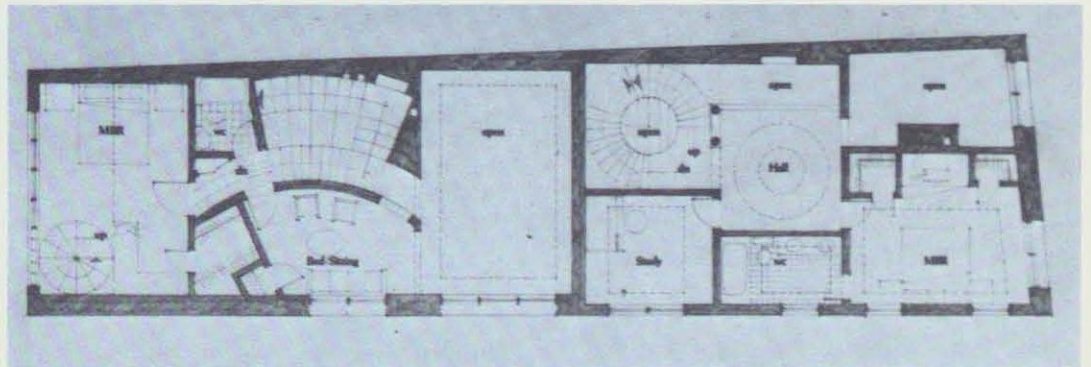
The building should help define and reinforce the streets on which it sits. It should be sympathetic to pedestrian movement, animate the street environment and respect the scale of its neighbours.



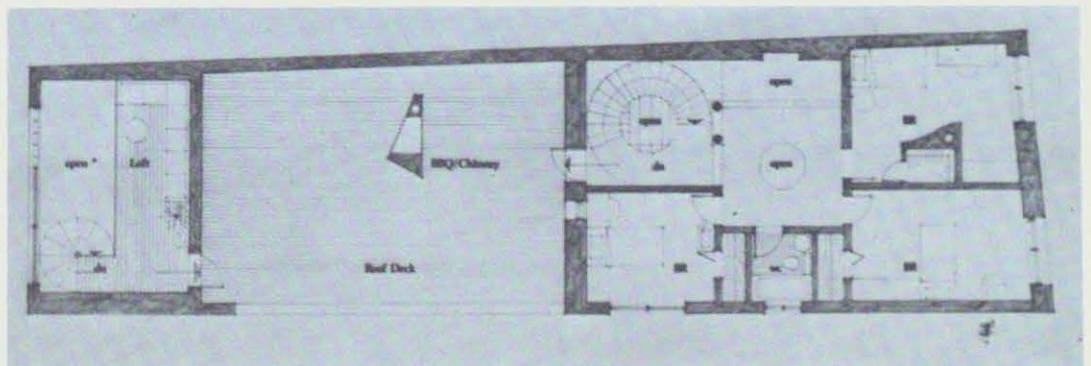
Plan Level 1



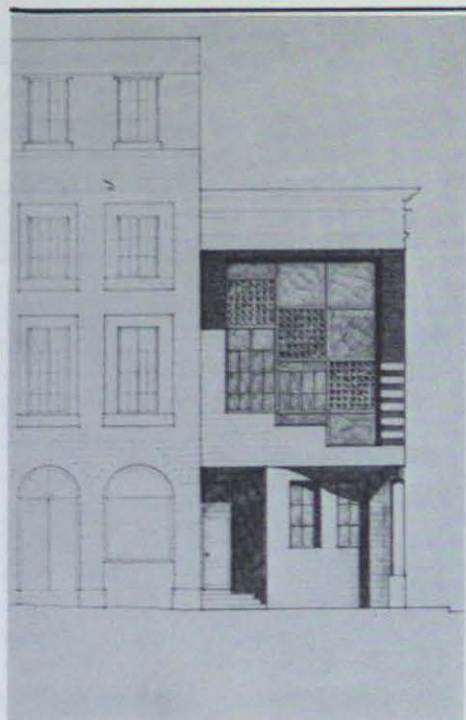
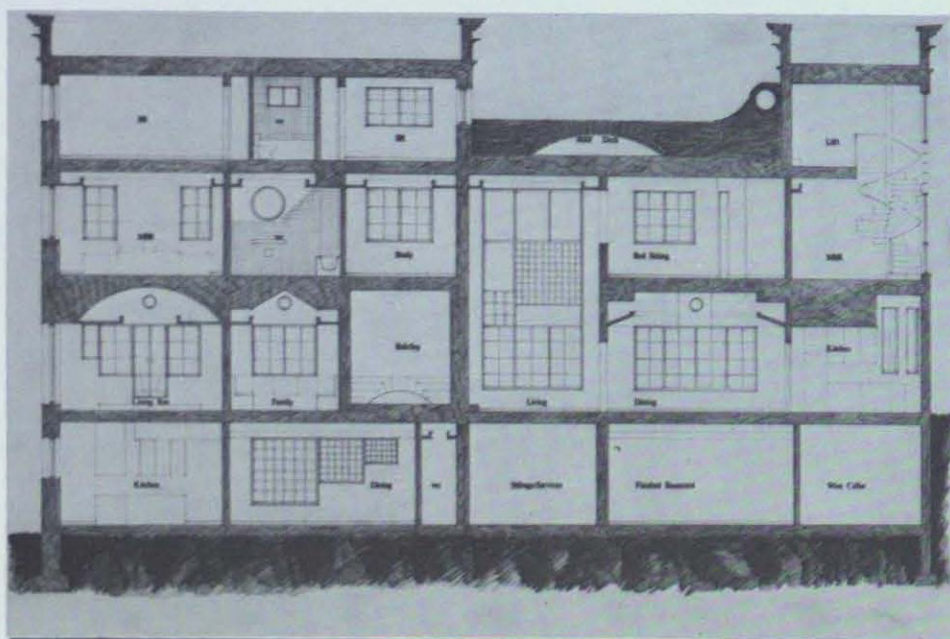
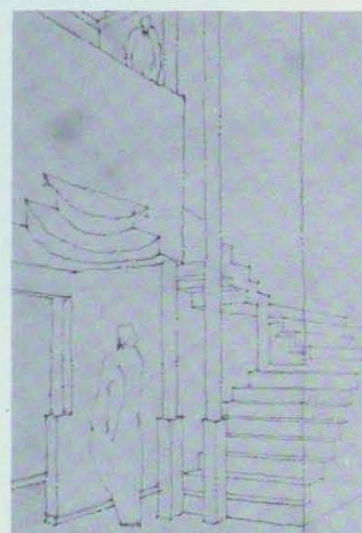
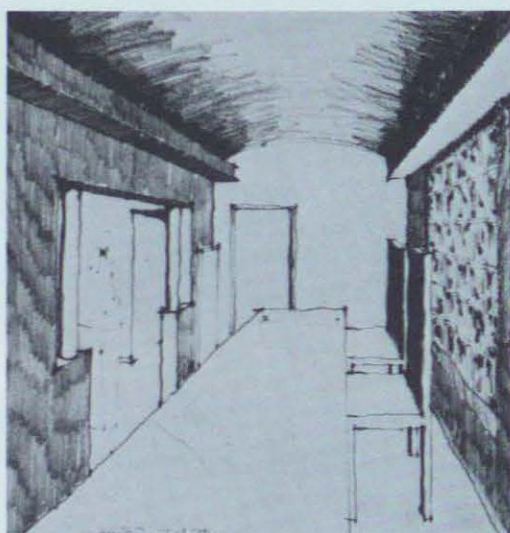
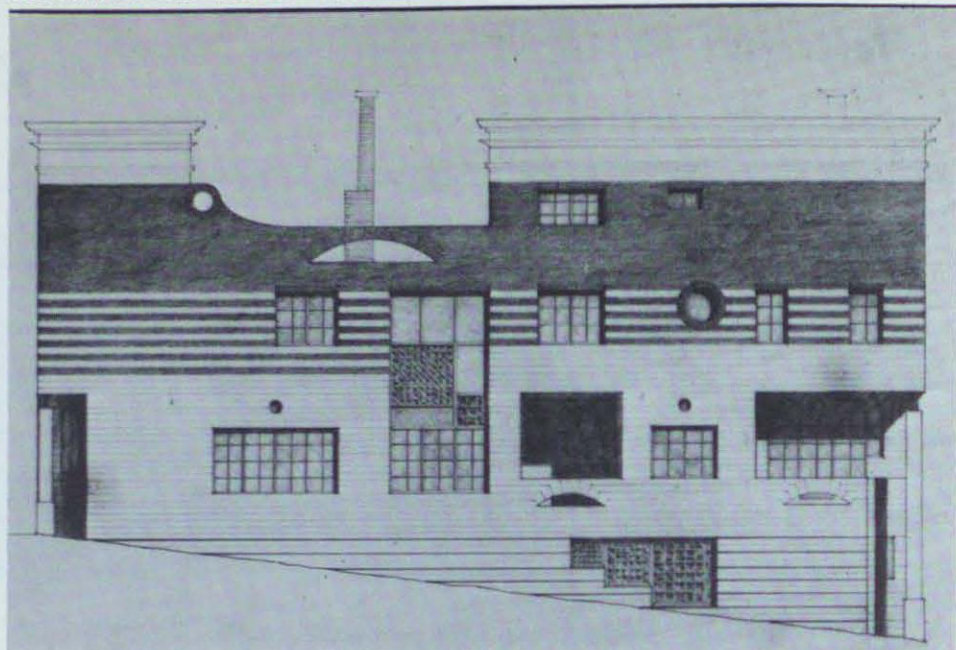
Plan Level 2



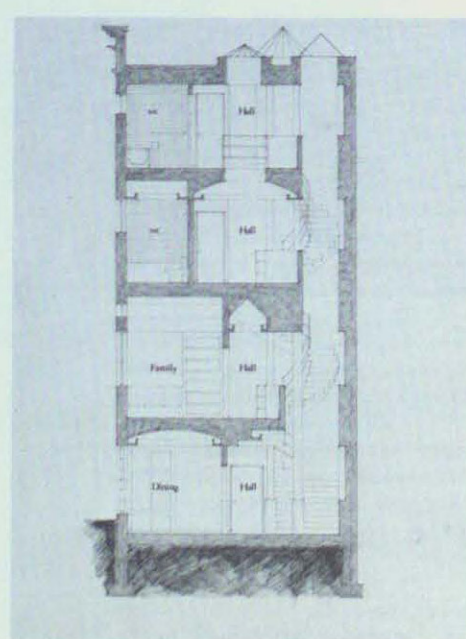
Plan Level 3



Plan Level 4

Elevation *Rue Saint Gabriel*Elevation *Rue Saint Paul*

Section Longitudinal



Section Through Architect's Hall