

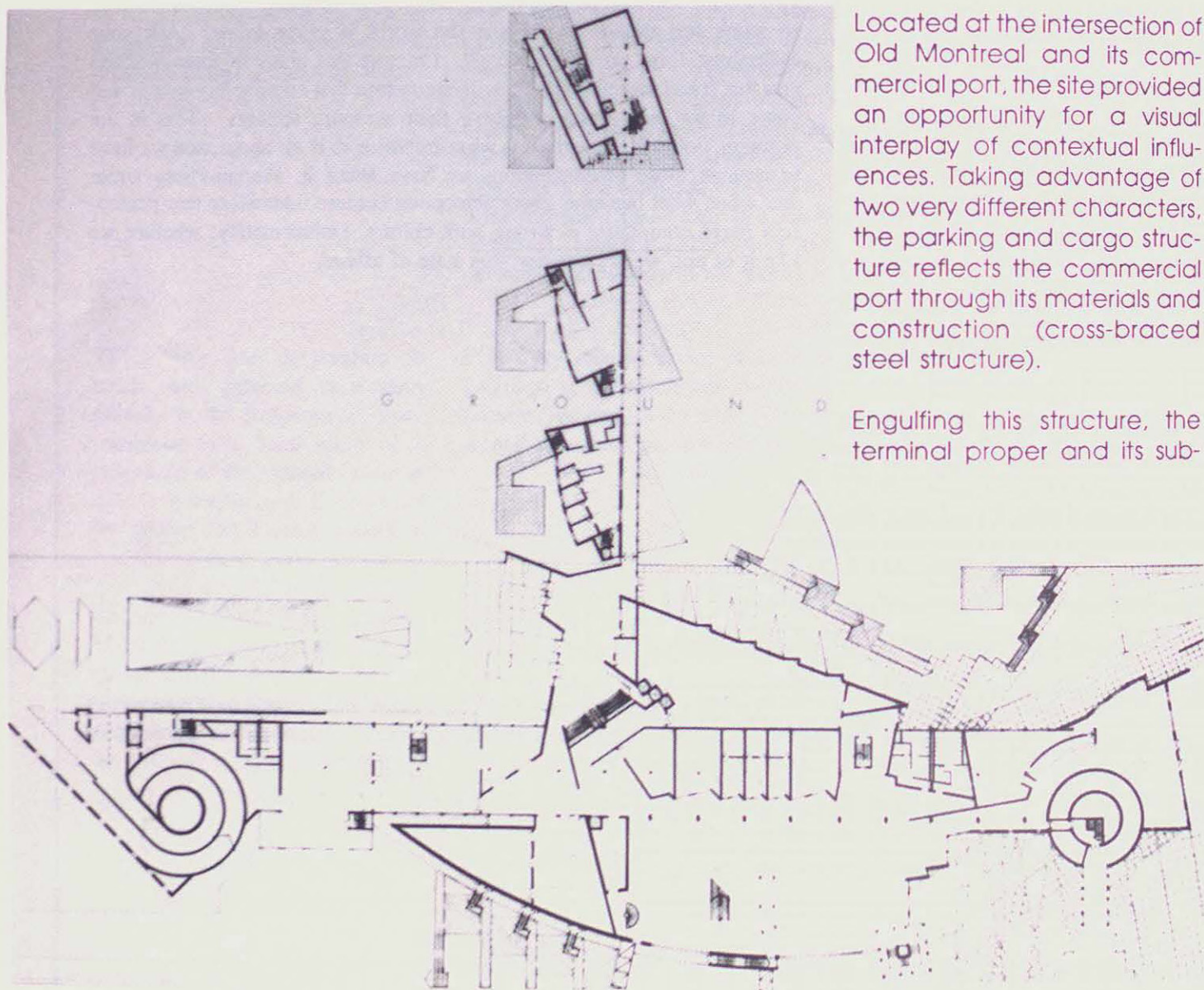
S T U D E N

G R O U N D

The following project is by Lev Bereznycky, a recent graduate of the University of Manitoba. In his thesis project for a passenger terminal in Old Montreal, intricacies in both plan and elevation conjure up images that are not only contextual, but symbolic of the building's function and its waterfront location.

Located at the intersection of Old Montreal and its commercial port, the site provided an opportunity for a visual interplay of contextual influences. Taking advantage of two very different characters, the parking and cargo structure reflects the commercial port through its materials and construction (cross-braced steel structure).

Engulfing this structure, the terminal proper and its sub-

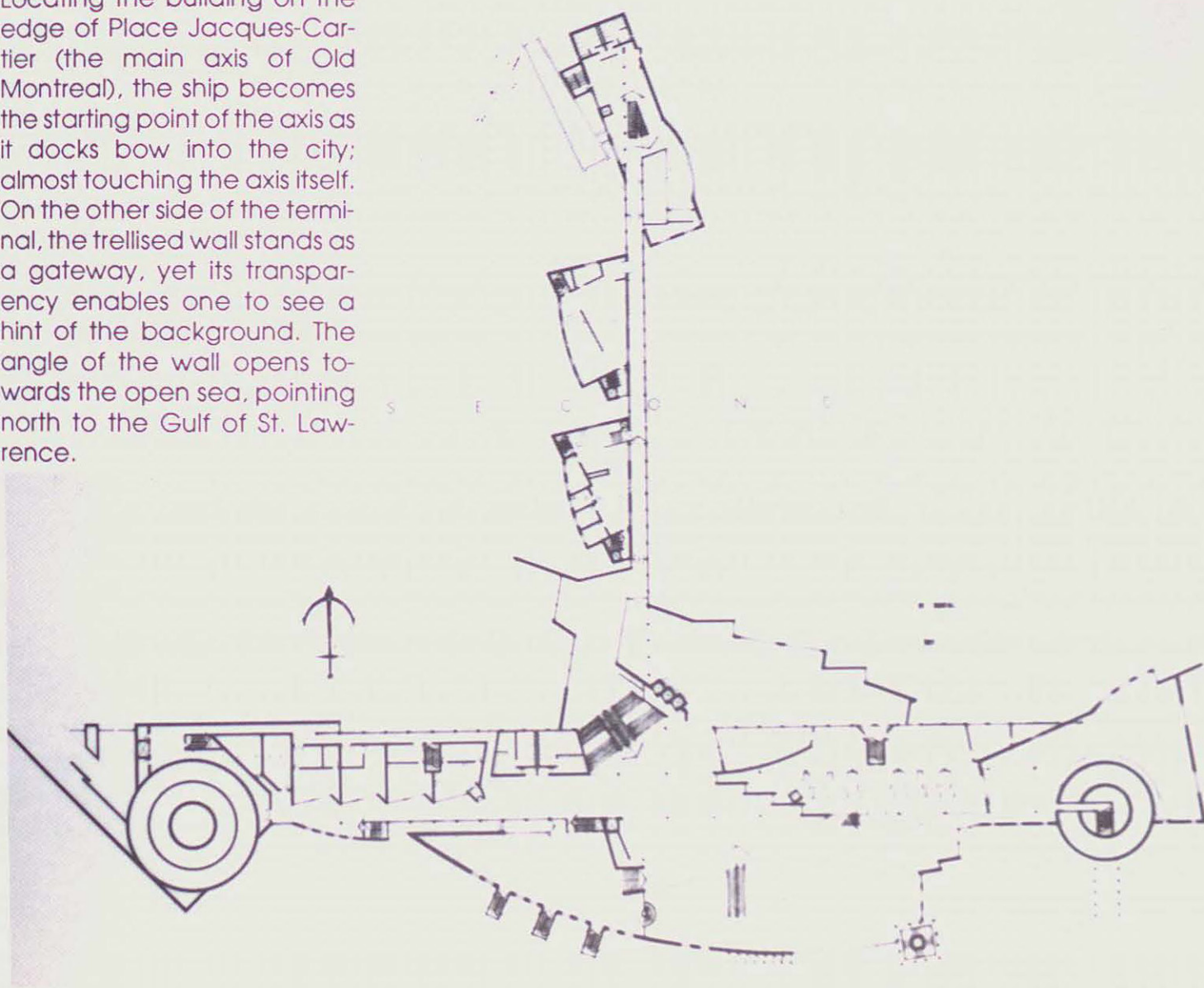


T W O R K

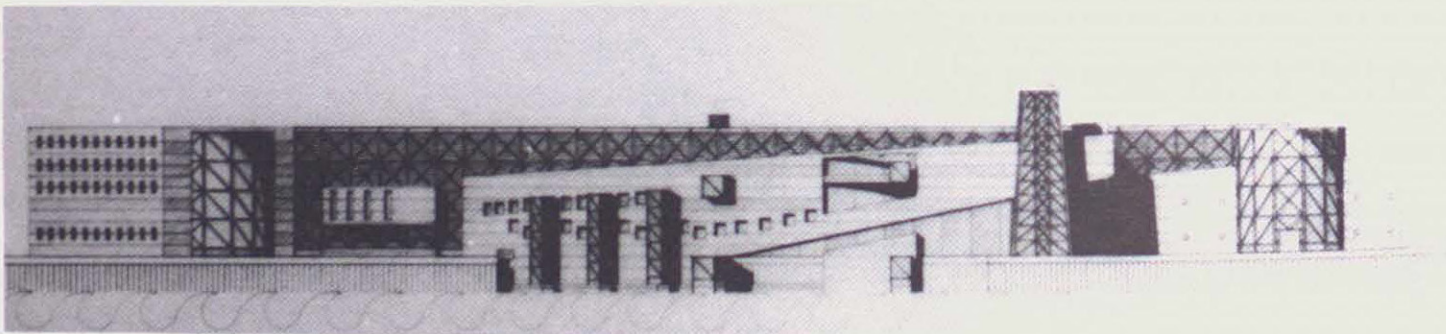
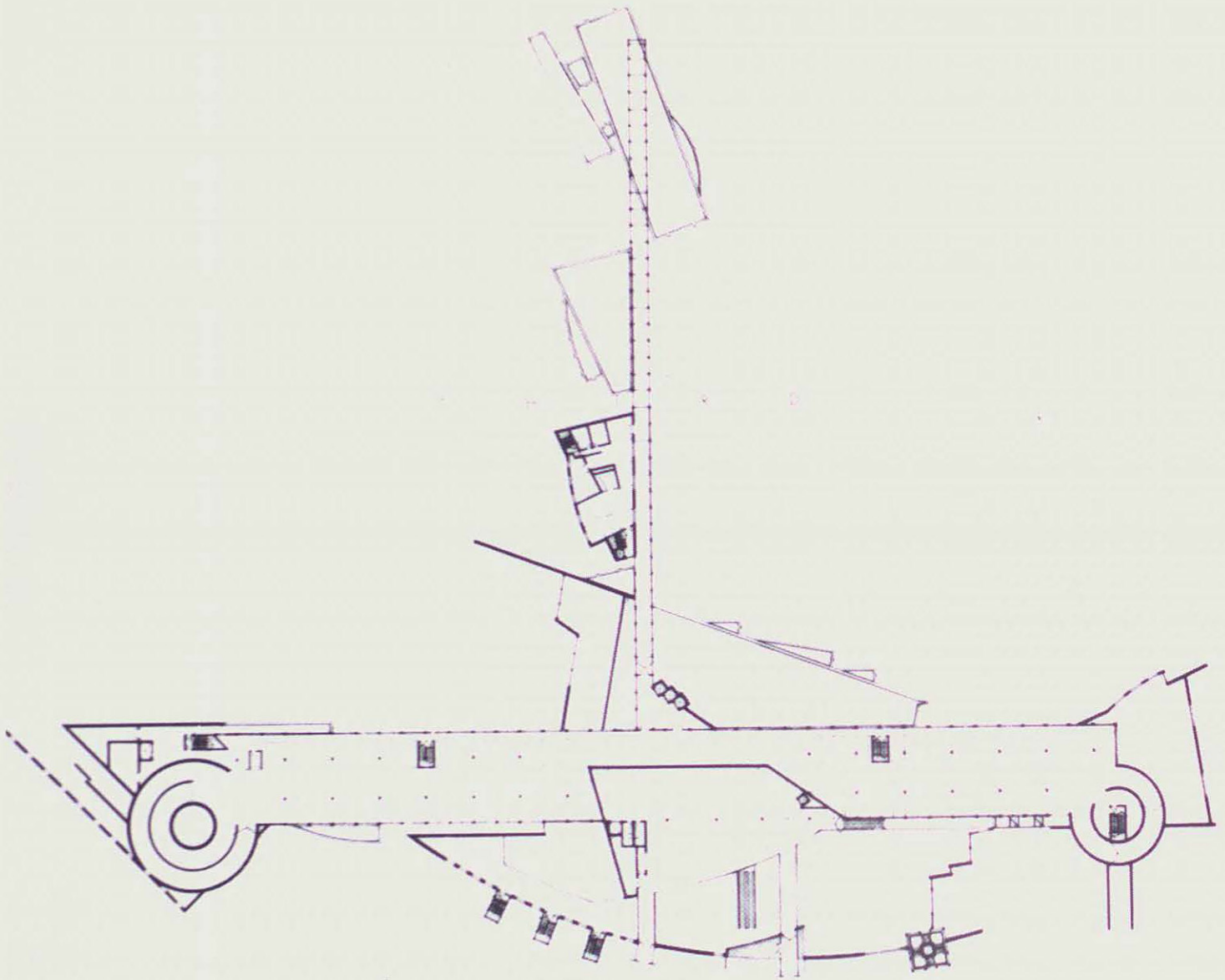
sidary areas reflect the character of Old Montreal. The west elevation makes use of equally spaced windows facing Rue de la Commune. Along the south wall, the windows invoke a sense of wavelike motion which also continues along the line of the inclined wall.

Locating the building on the edge of Place Jacques-Cartier (the main axis of Old Montreal), the ship becomes the starting point of the axis as it docks bow into the city; almost touching the axis itself. On the other side of the terminal, the trellised wall stands as a gateway, yet its transparency enables one to see a hint of the background. The angle of the wall opens towards the open sea, pointing north to the Gulf of St. Lawrence.

S E C O N D

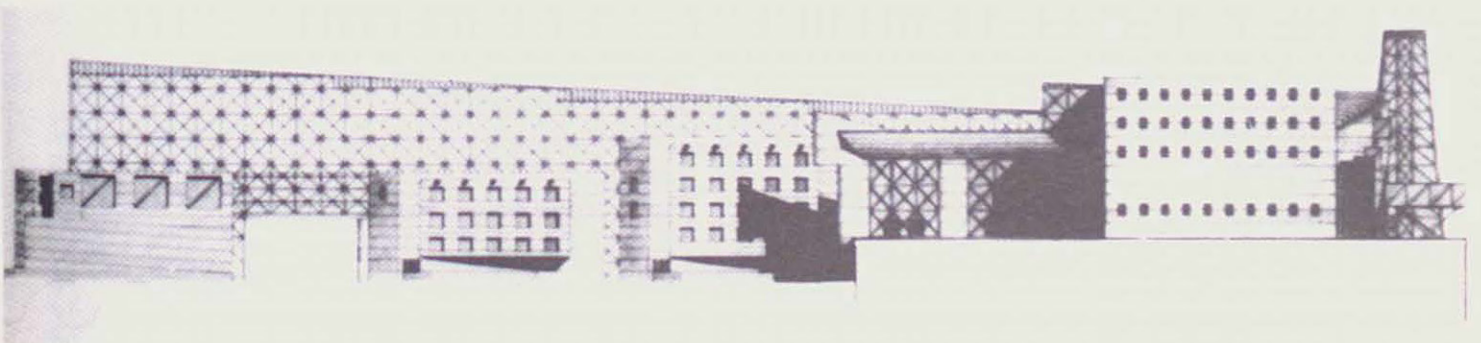
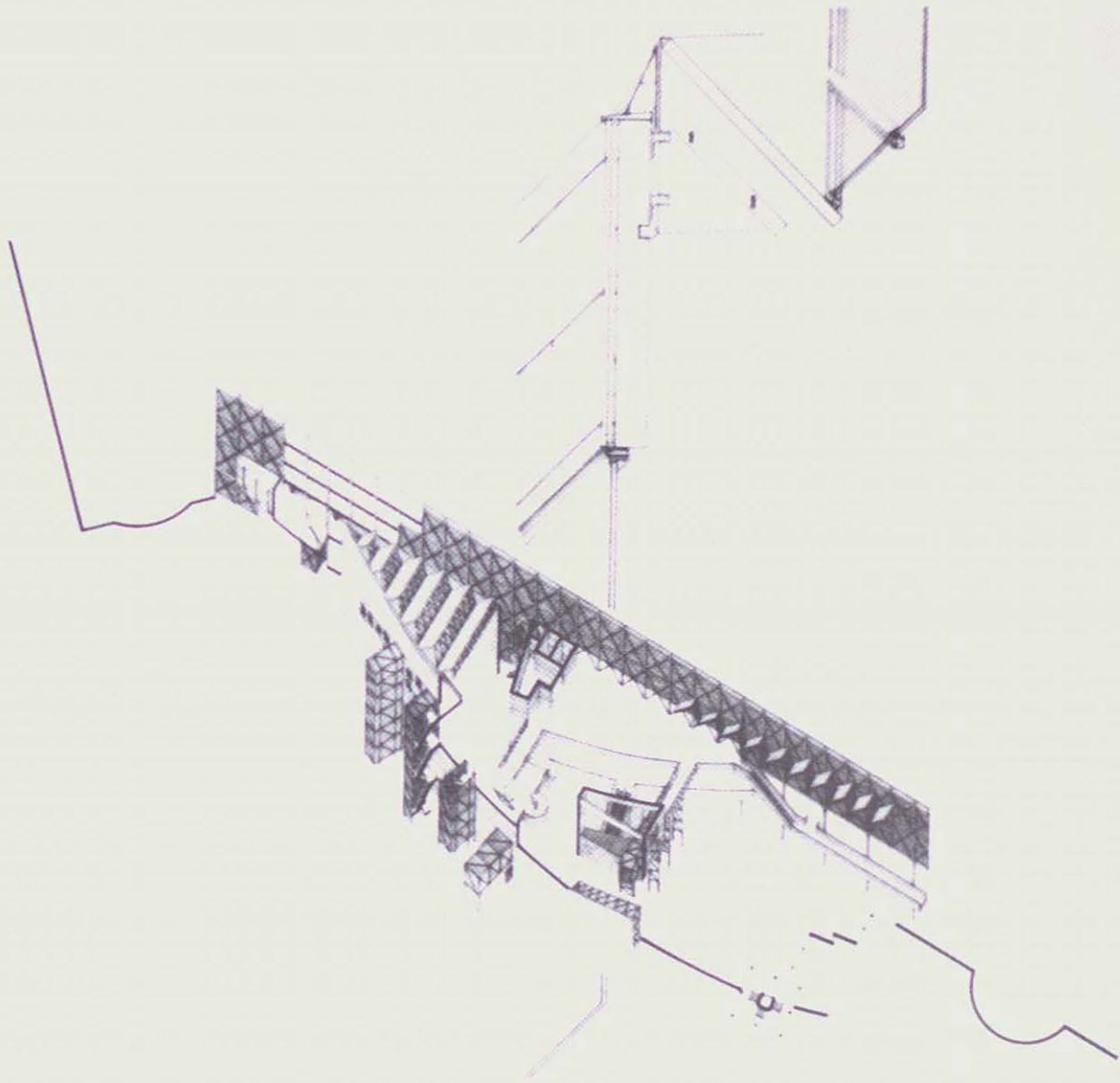


T H I R D

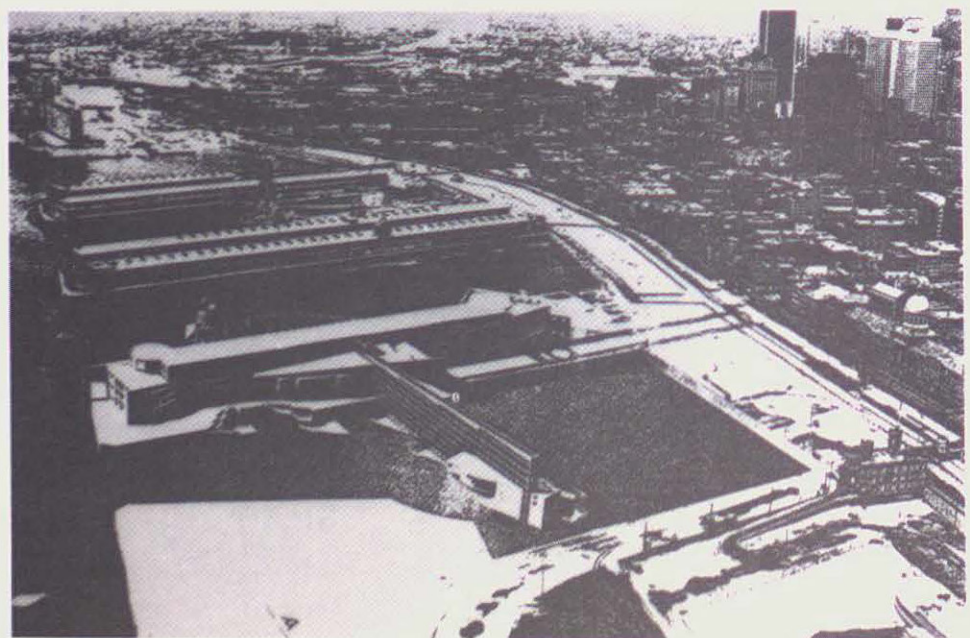
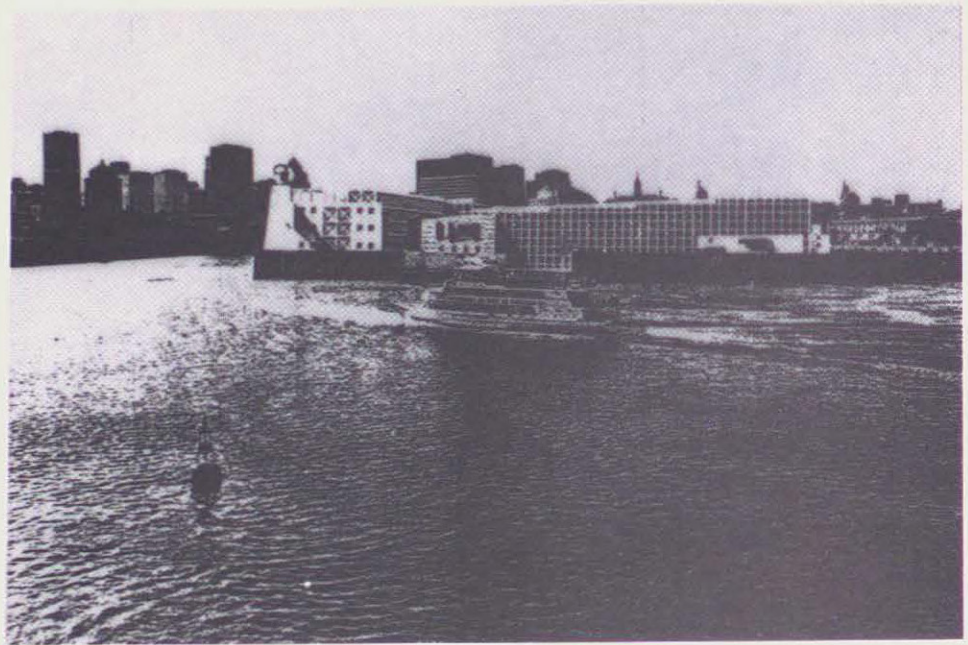


S O U T H

I C E - O H



W E S T



T H E G A L L E Y

