

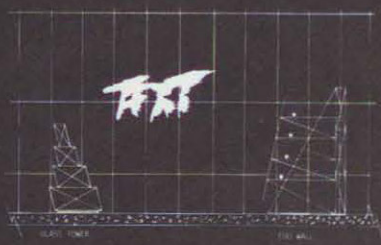
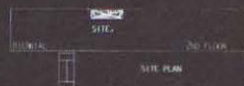
ARCHITECTURE EGO / CODES OF DISRUPTION / THE PHYSICAL MEMORY OF DEATH

ARCHITECTURE EGO IS A VIGILANTE DISGUISED AS AN ARCHITECT WHO WANTS TO SATISFY HIS MELANCHOLICAL LOSS OF THE IDEAL. HE DISPOSES POWER OF DESIRE BY VICARIOUSLY CONTROLLING THE SUBCONSCIOUS MENTAL DISORDER OF THE OTHER: TO OWN THE METROPOLIS AND THEN THE ENTIRE NETWORK. THROUGH FASHION, HE APPEARS / DISAPPEARS THROUGH ELECTRONIC SIGNALS, A DISCERNING SCHIZO. HIS EXTERNAL INFLUENCES CREATES A TECH IMAGE FOR HIMSELF AS A FASHIONABLE ARCHITECT, PRESTIGIOUS AND POWERFUL. BUILDING TOWERS AND TOWERS HE FINDS THAT HE IS A SPECTACLE OF OUR SOCIETY, SUSPENDED IN MID AIR, BEING WATCHED AND WATCHING, HIS EYE BECOMES THE SIMULATED TV SCREEN, WATCHING HIS MOVES AS THE METROPOLIS SLIDES AND TURNS THROUGH HIS FINGERS. THROUGH HIS ELECTRONIC CABLES HE HAS MARTINIS WITH PRESIDENTS AND CHATS WITH GREAT DAMES WHILE RIDING HIS HELICOPTER INSPECTING THE FABRICATED ASTROTURF CITY. HE BUILDS CODES TO DISRUPT THE EXPECTED ORDER. HIS EGO THE PHYSICAL MEMORY OF DEATH A THEORETICAL REPRESENTATION.

Alexander Pills



CURTAIN GLASS WALL - DIRECTOR GENERAL'S OFFICE
 1000 SQ. METERS (10,764 SQ. FT.)



ARCHITECTURE IS A STRONGLY DEFINED AS AN ARCHITECT WHO WANTS TO DESIGN
 HIS OWN ARCHITECTURAL IDEAS IN THE
 PRACTICE OF ARCHITECTURE. HE IS A SPECIALIST OF HIS COUNTRY, HIS THE SURVIVAL OF ARCHITECTURE.

CURTAIN GLASS WALL - DIRECTOR GENERAL'S OFFICE

