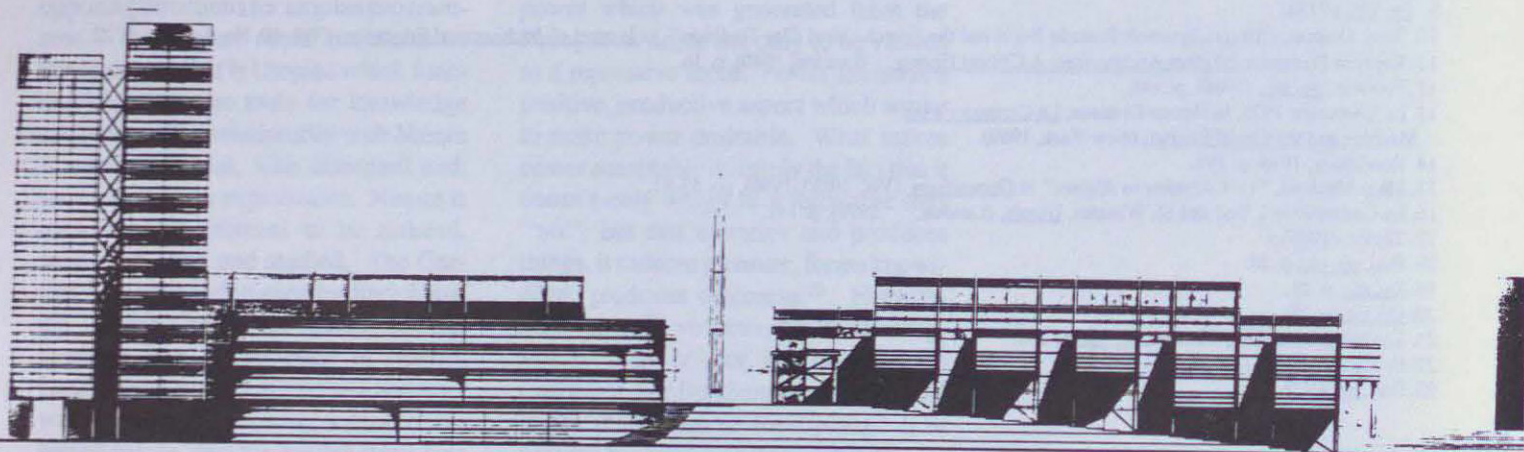
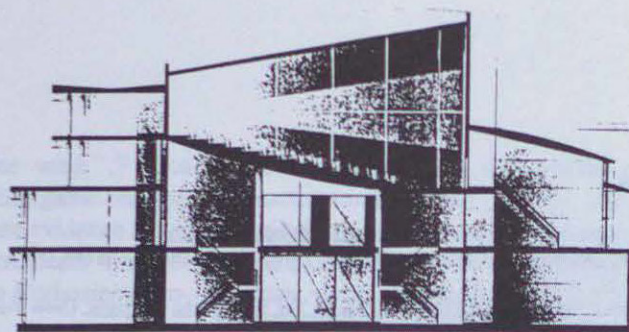


T U N S

Student

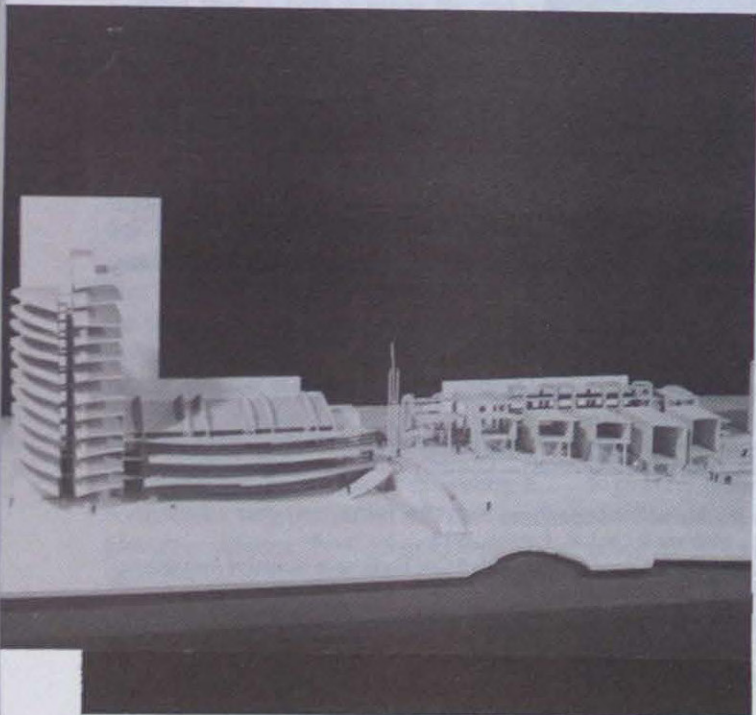
Work

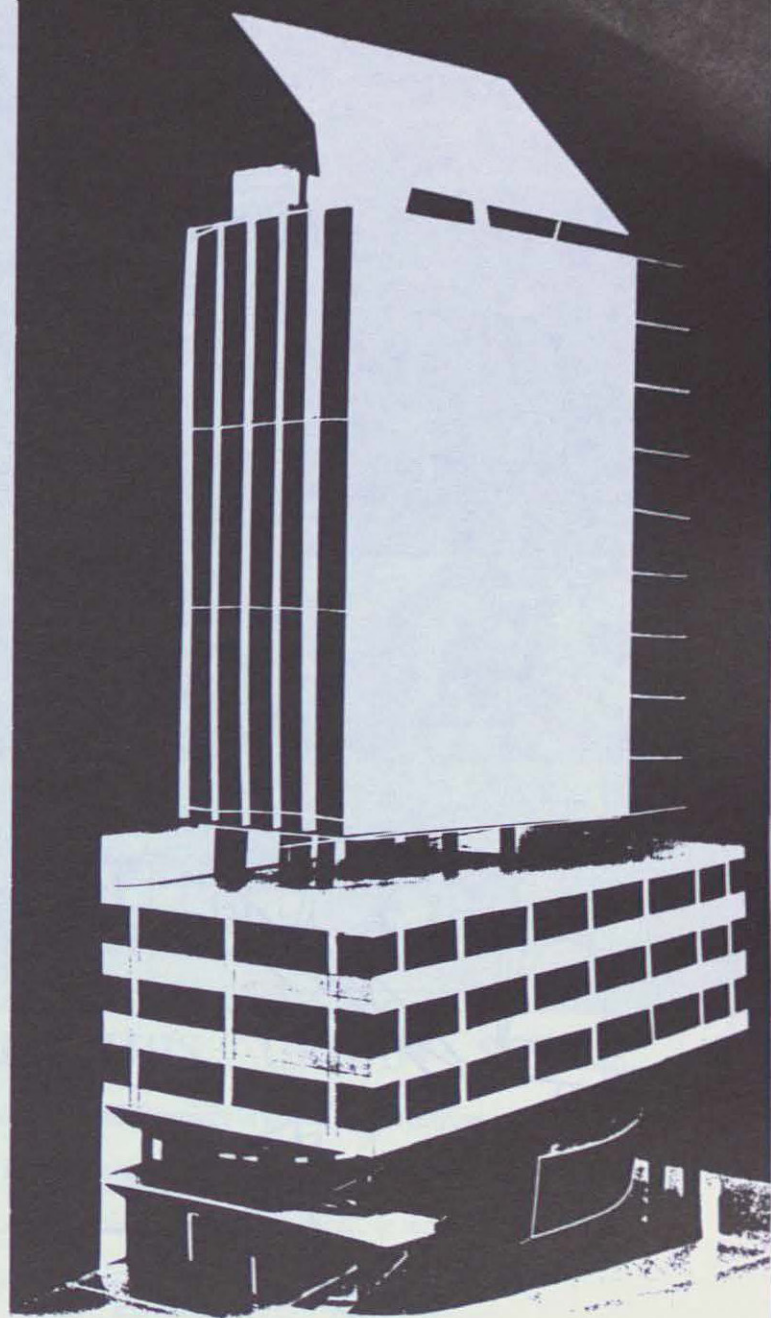
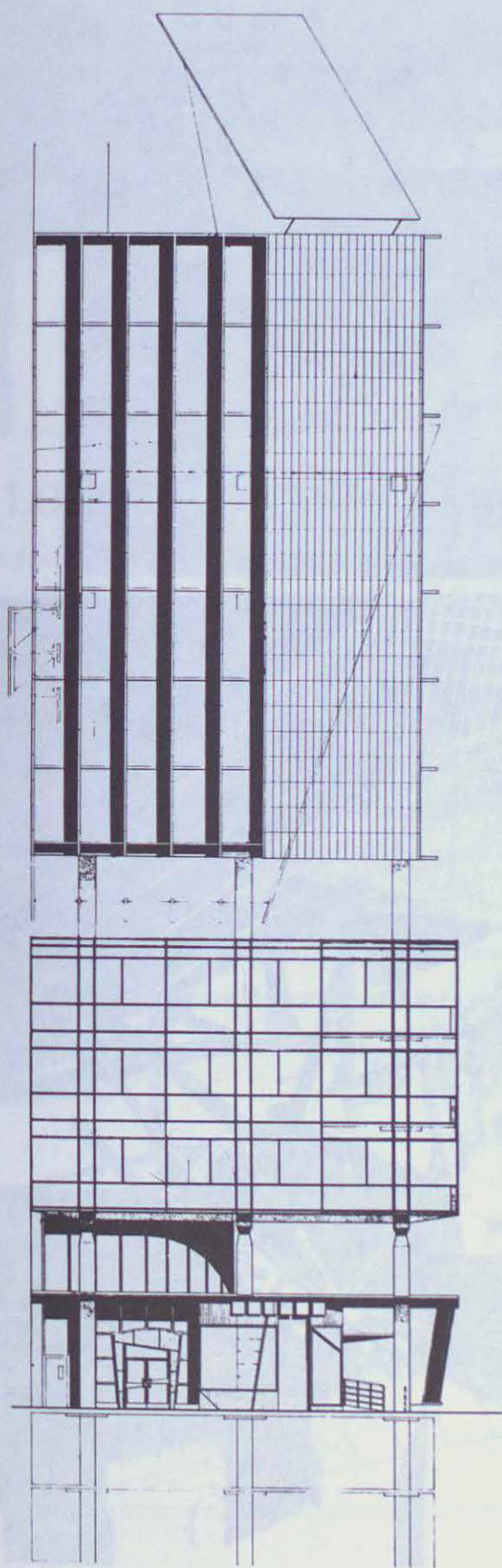


Works by Brian Kucharski

THE PROJECT CONSISTS OF A

Multi-use complex, for a site along the waterfront in Dartmouth, Nova Scotia. The scheme is divided into three functional groups; institutional, pop/cultural and commercial. The portion of the project closest to the civic steps (seen in the model) is a main branch library for the city. An outdoor public space connects the library with a cinema/market building which in turn connects to a fourteen story office tower. The intent of the project was to give the center of Dartmouth a presence, landmark, or beacon, that would be familiar and welcoming to thousands of commuters working in Halifax, and traveling across the harbour each day.

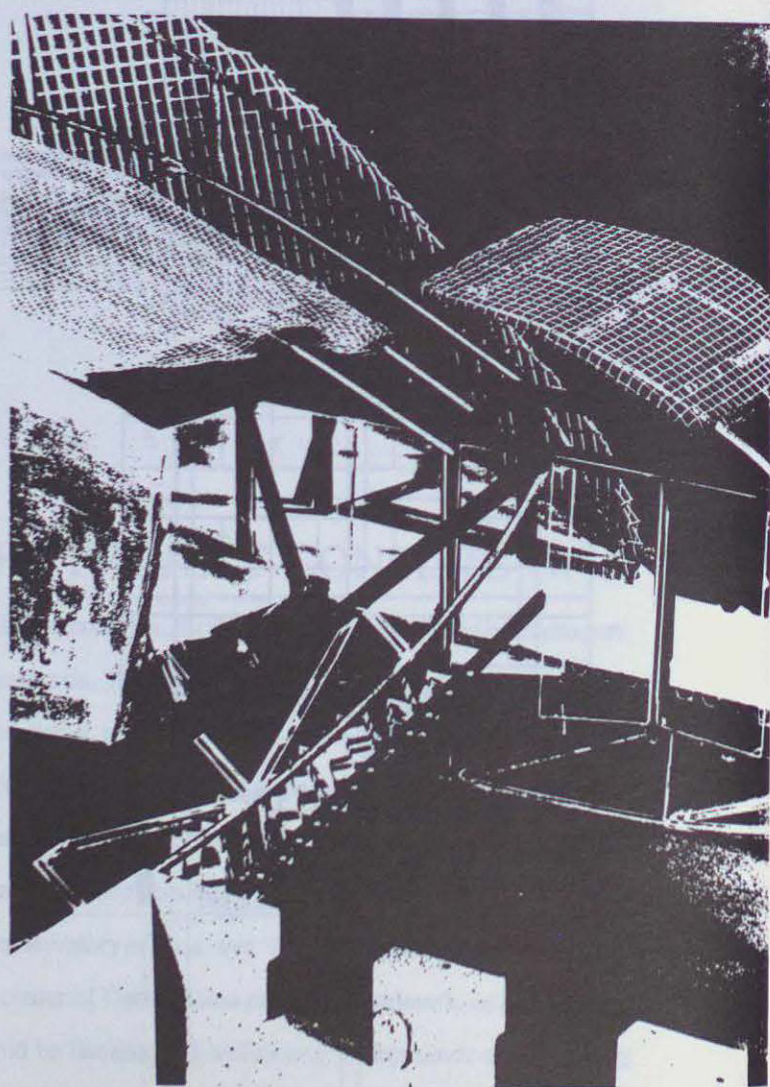
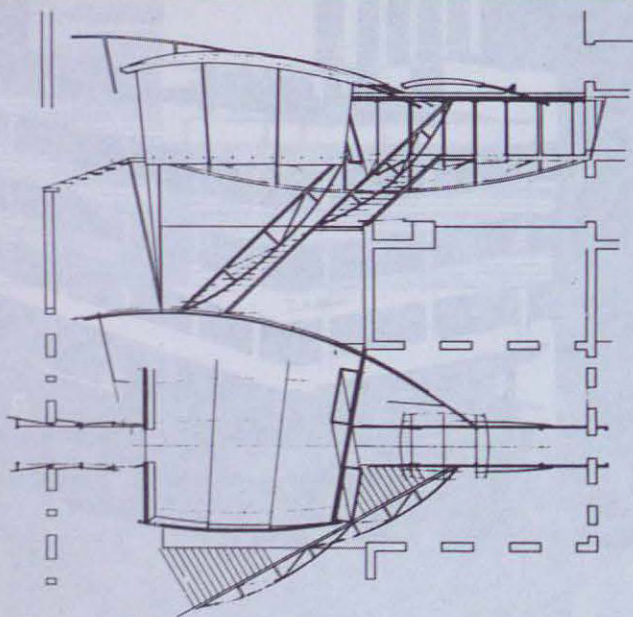
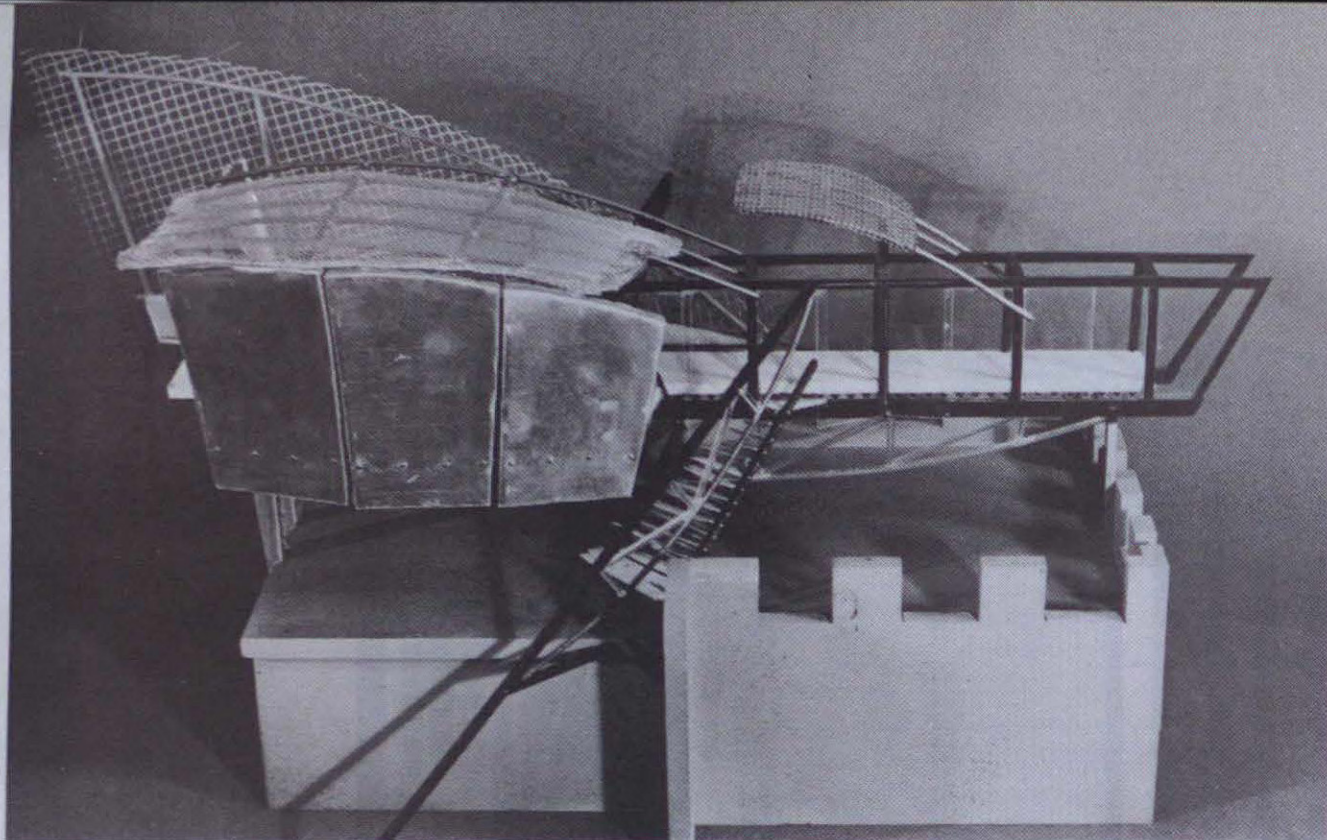




Works by Mikael Sandblom

THIS OFFICE BUILDING ON

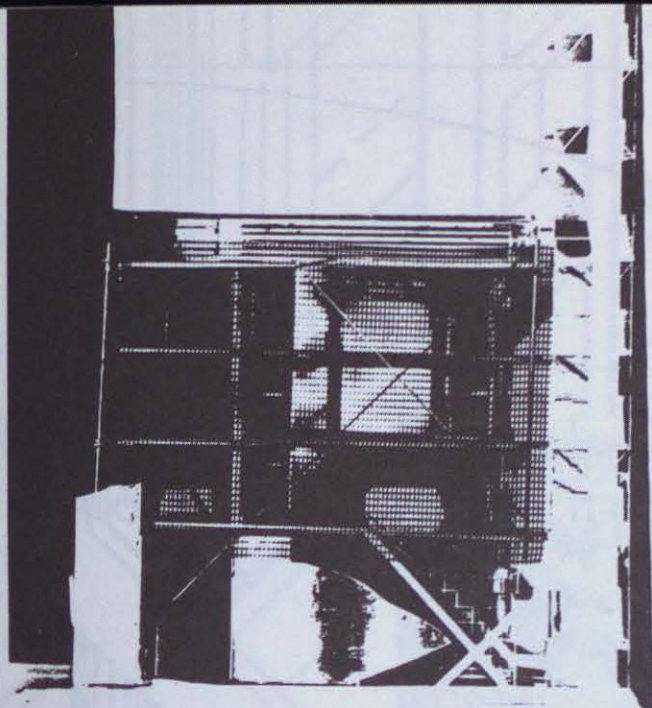
the short end of a city block is based on an urban reading of the city. Its meaning is derived from three distinct scales of reference; the sidewalk scale of the pedestrian, the scale of the city block, and finally the scale of the skyline. It is a modern building contextually compatible with the Nineteenth Century urban fabric.



Works by Steve Outerbridge:

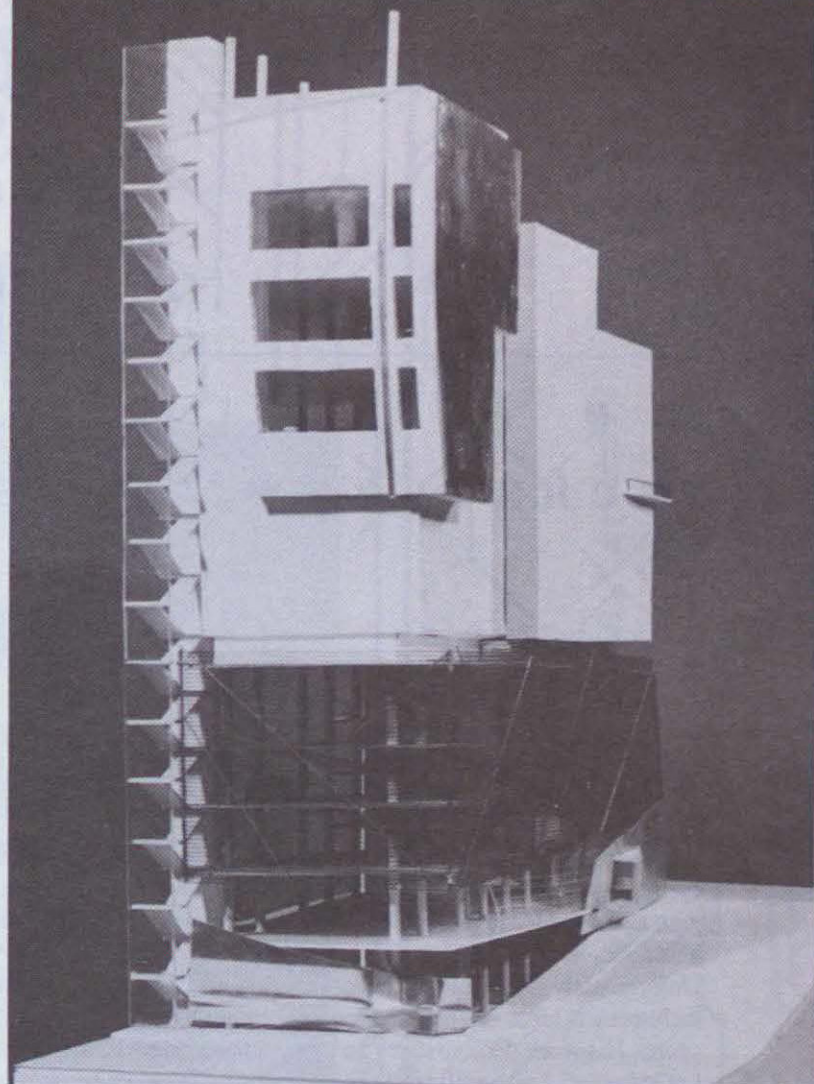
I. THIS BUILDING STUDIO

was conceived with an attitude towards architecture as sculpture in a design which deals with path and suspension. The design was a gathering place along a raised corridor between the studios of the architecture and engineering faculties, and was built to portray a fragile structure in which all components were necessary to retain stability.



II. LOCATED ON THE CORNER

lot of a downtown city block, this urban form project portrays a vertical frame of reference to a city map. The first zone is that of the sidewalk and the pedestrian. The second zone deals with a partial separation; placing the automobile up in the building, looking out, provides an inverted perception of it as a display item. This concept; therefore, alleviates congestion while utilizing building space (second, third and fourth floors) which inevitably becomes under utilized on the downtown strip. The third zone or the top of the building, separated by a relief of mechanical functions, contains office or residential space and a parasitic restaurant, clinging to the skin of the building and accessed by ground elevators.



III. THIS URBAN SCALE,

double city block project is an attempt to display a revealing of the initial livelihood of the cities waterfront area where the site is located. This plan becomes a narrative script acted out by five stage members, each in a varying degree of city fabric metamorphosed dress.

