

*Norman Landry is a student at the McGill School of Architecture. This project was part of a second year studio conducted by Professor Jeffrey Hannigan, which explored the architecture and infrastructure of the American interstate highway system.*

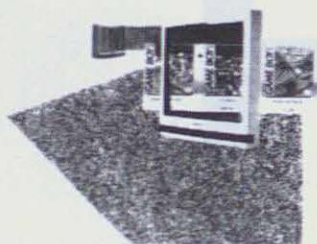




## Between Highway and Home McGill Thesis 1993

*Me and Pam, even before we were best friends, would meet at Dunkin' Donuts before class. She'd be there with Suzy and Mary, and I'd come later at a quarter to eight to have our daily chocolate cream donut and coffee. The place was close to our school so we'd push the fifteen minute recess to its limit and race over to DD's, braving the cold in our T-shirts to have a quick snack and chat. Sometimes we'd go out of our way to find a remote DD's and stay there for hours talking or just observing the people around us, trying to figure out their stories.*

METRO SHOPPING



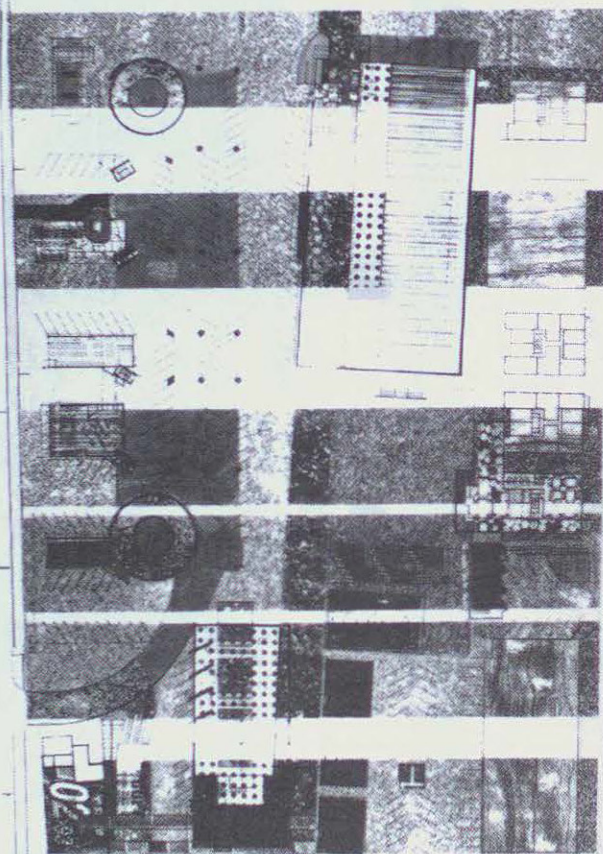
LIBRARY ARCADE



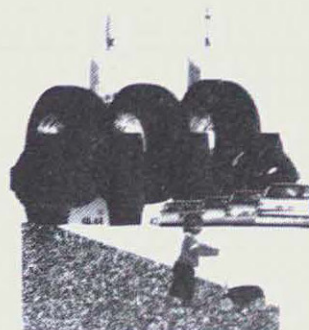
LAUNDRY PARK VIDEO STORE

In the landscape between highway and home, our commercial culture of Fast and More, Self-Serve and Drive-Thru comes in conflict with the internal, private world of home. Although the uniformity of mass consumerism appears in standard architectural types (Dunkin' Donuts is pink and orange with plastic swivel chairs along a windowed wall overlooking parking), this setting is transformed by the church group, the runaway, the nanny, the salesman, the truck driver and the gambler.

Between an urban highway and a row of low-rise apartments, community living crashes into car culture as collage: billboards and markets drop into Metro tunnels; video games and books stack in a used car lot; a laundromat washes over asphalt watching a movie park and ball courts; daycare children play with a 1000 parked cars; coffee stains used magazines; TVs and pizza slice into the bowling alley.



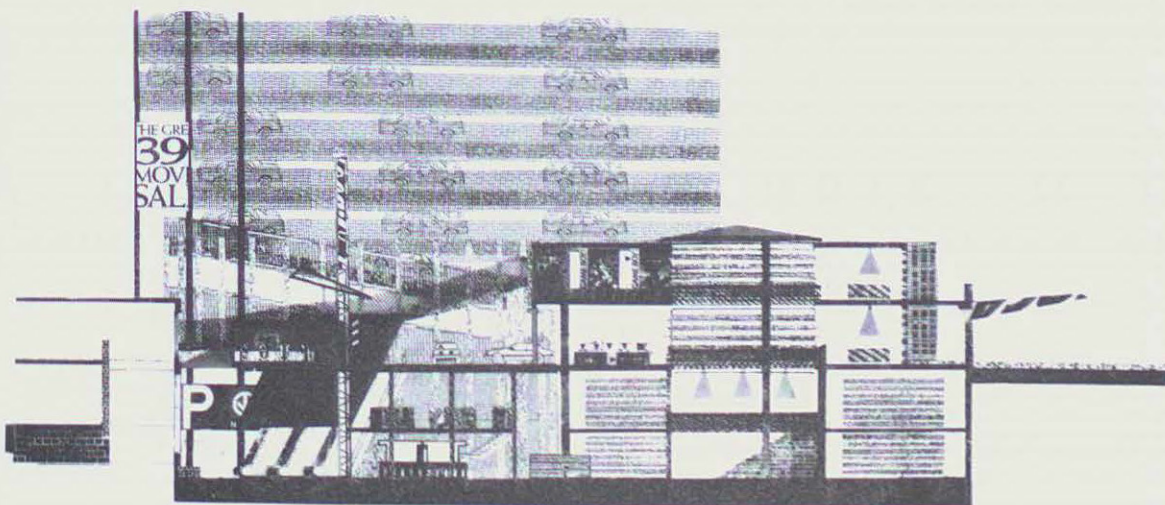




DAYCARE PARKING GARAGE



COFFEE SHOP USED BOOKS

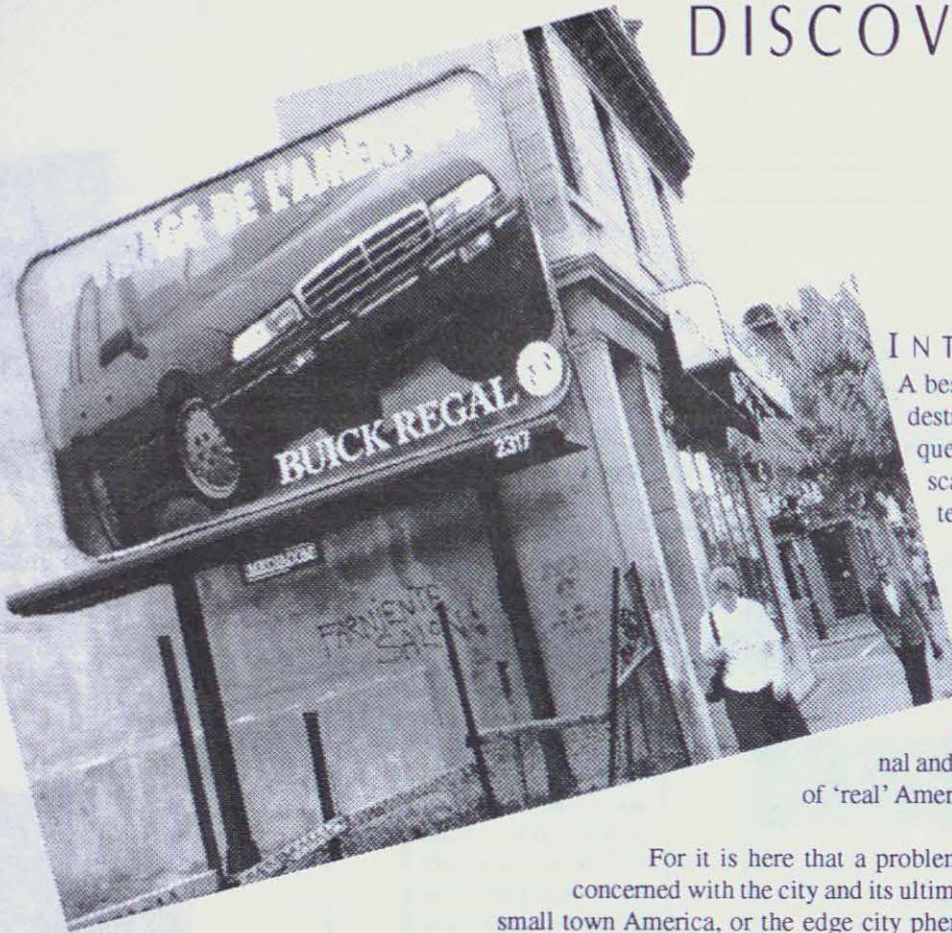


SHADE S&B POOL-HALL, BOWEN, 1982

Student Work



# DISCOVER AMERICA\*



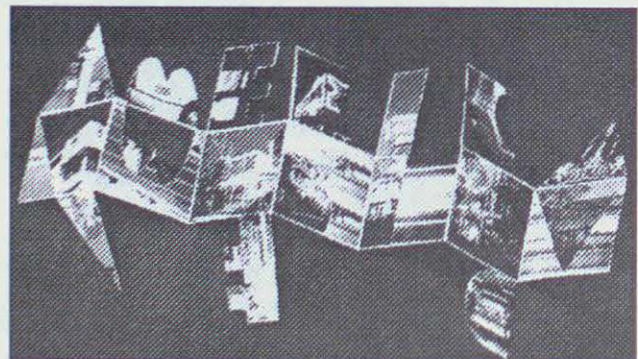
## INTRODUCTION

A besieged territory (the landscape), cities self-destructing, densification and urban sprawl, the question of urbanity or of a domesticated landscape are at the centre of the debate on architecture and urban design in America...

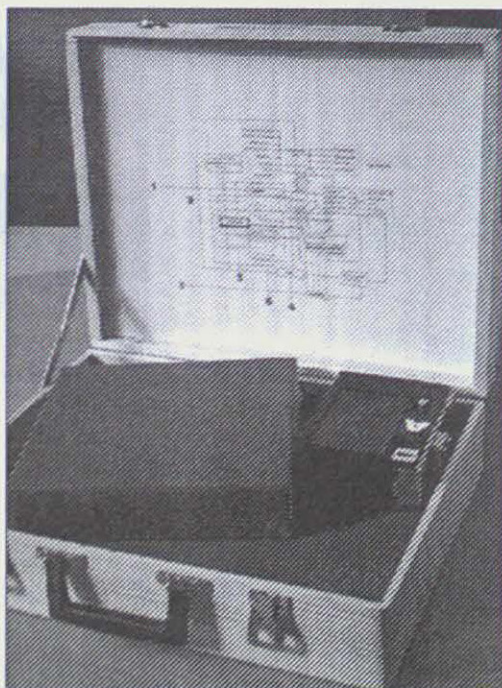
The studio is based on the research of the diverse spatial, material and social conditions which form the American environment today. It is the exploration of these 'other' spaces, interstitial lands, banal and forgotten, which may permit the discovery of 'real' Americas...

For it is here that a problem exists: many studies and arguments are concerned with the city and its ultimate realisation, the suburb and the image of small town America, or the edge city phenomena. The in-between - the ubiquitous space of America - and the difficulty of its appropriation are not really considered.

A hypothesis is proposed: the public facility acts as catalyst and connection in changing the direction of America!



Fold Out America Maud Paulin



Travel Kit Louis-Charles Lasnier

Université de Québec à Montréal



## The Changing Direction of A M E R I C A

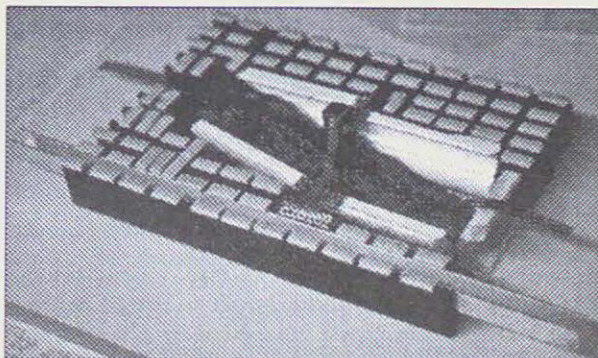
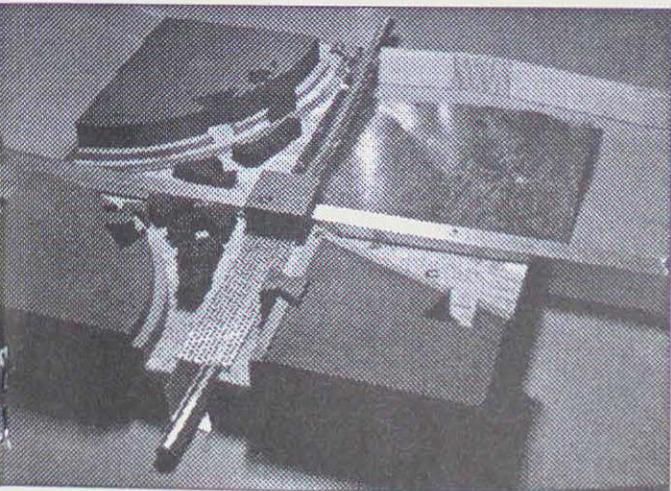
Traditionally the public facility and its architectural infrastructure has anchored our understanding of the territory. The siting of these structures in the territory implicitly means a strategic action. The choice of a site and the elaboration of a programme (in what forms does social life exist?) are tactical elements which begin a process of architectural communication. The syntactical and tactile developments of a building and its environment are other elements which follow.

The research on cultural expression (the changing direction...) is communicated through the realisation of the project. The project represents through technique, spatiality, materiality, as well as its relationship to the landscape, our desire to live taking form.

The studio proposes the study of the role of the public facility as a structuring element in a community and territory, as well as the realisation of the architectural project - tactile, and spatial expressions of our culture.

*\*This is an account of a year long studio held at UQAM for final year students. The studio included several French exchange students and was conducted by Randy Cohen of Atelier Big City, Montréal.*

CP Lines in Montreal West Louis-Charles Lasnier



Francon Quarry Gael Botrel