

House on a Lake

Anne Bordeleau

Christine Burke

THE SITE BORDERS the Big Rideau Lake, near Narrow's Locks, Ontario. The deep cedar-tree lot gently slopes up to the steep shoreline, where an existing deck is cantilevered above the water.

The land is approached from the forest on a gravel path at the low end of the site. Stone steps cut into the concrete retaining wall, leading up to a deck oriented towards the lake.

The house is nestled in a clearing where the lake, forest, sky and land harmonize. It opens and reaches to the outside, bringing in wood, stone, light and water.

Activities, plan and structure are orchestrated around a central column. Originating in the foundation, the column reduces the span of the beams supporting both floors, and carries upwards to bear the roof and frame four central skylights. The plan swirls around the column recalling the details of roofs photographed in Beijing.

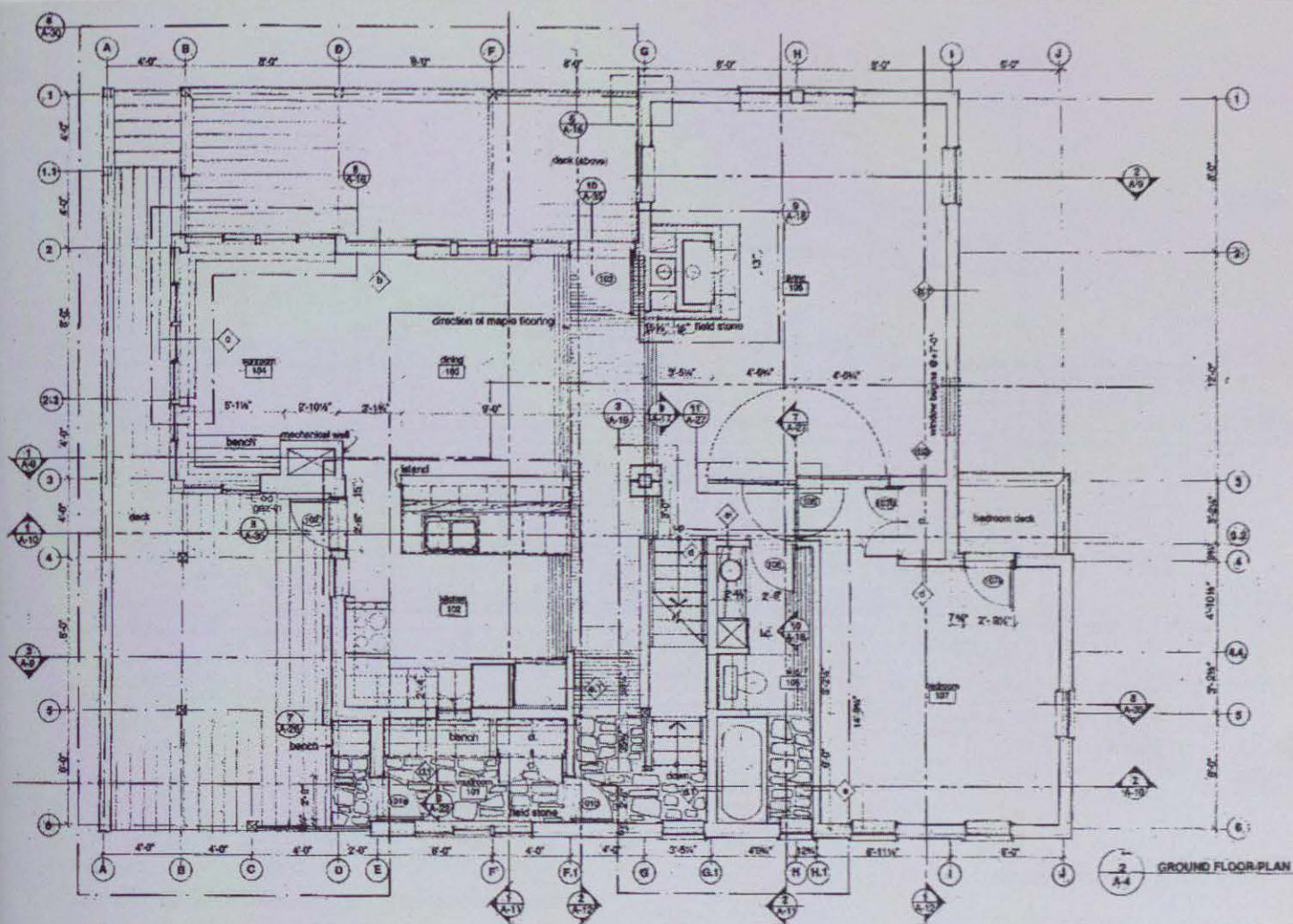
The motion around the column resonates in different ways throughout the house. Beside the central column and above the staircase, sloped cedar panels are operated by pulleys to let in sun from the four skylights. In the kitchen and on the upper floor, two interior windows can swing about, offering views to adjacent spaces. Wide steel-framed cedar doors revolve around a central rod to open the living room to a bright reading room, or to close it off to create a bedroom. Even the foundation itself pivoted eastward as it was being marked in the ground.

We hope that this movement remains inherent to the life of the dwelling.

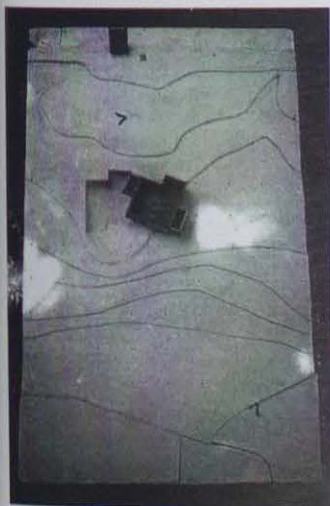
Anne Bordeleau and Christine Burke, both B.Arch McGill '97, are working in Montreal and Toronto respectively.



forest elevation



ground floor plan

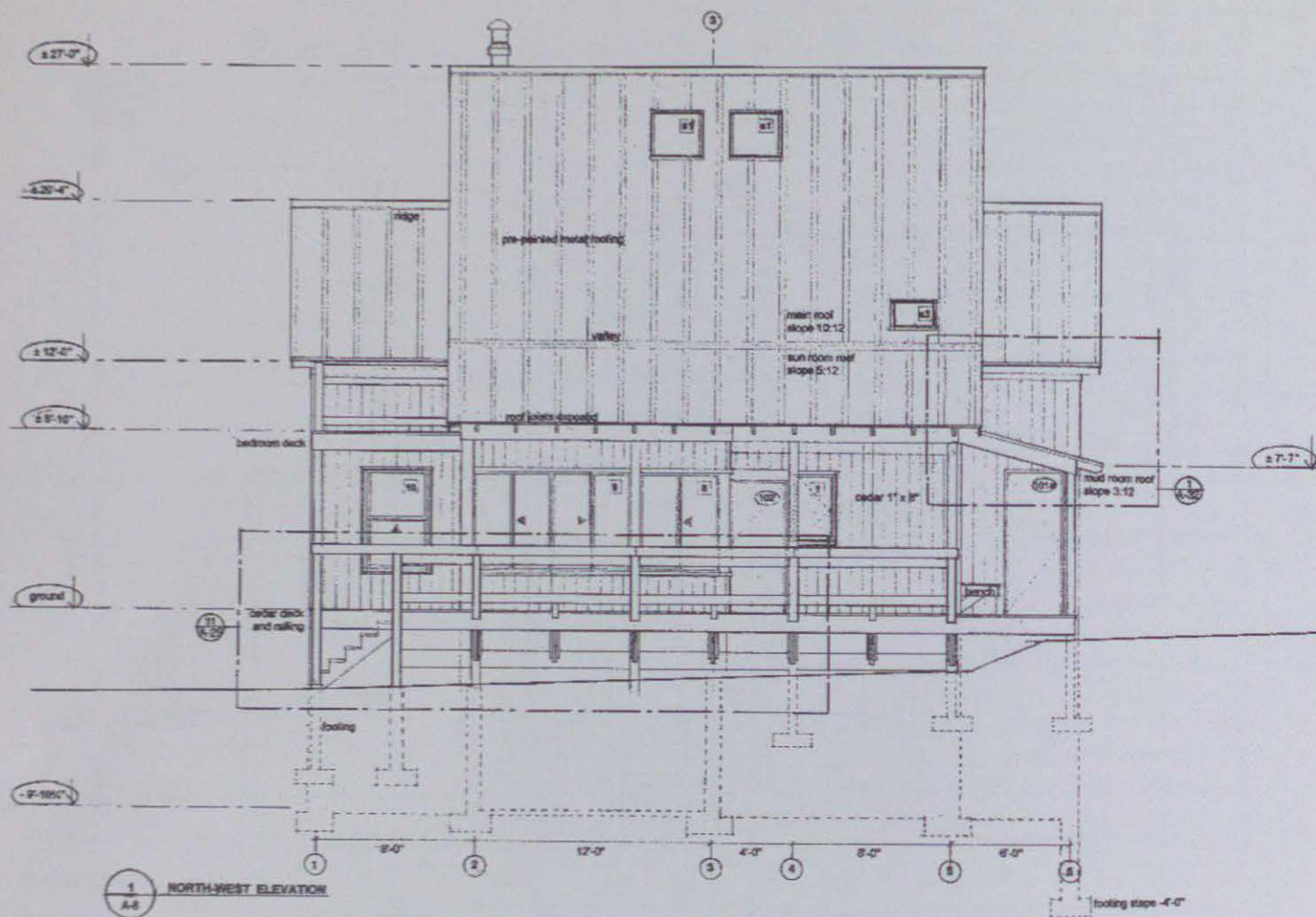


site model



Soffit Details.
Beijing, China 1995

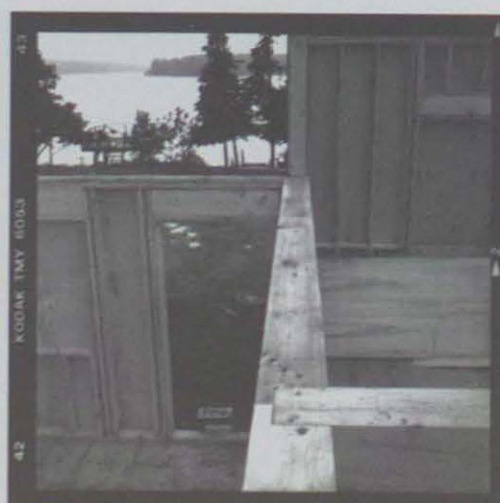
Beijing roof details



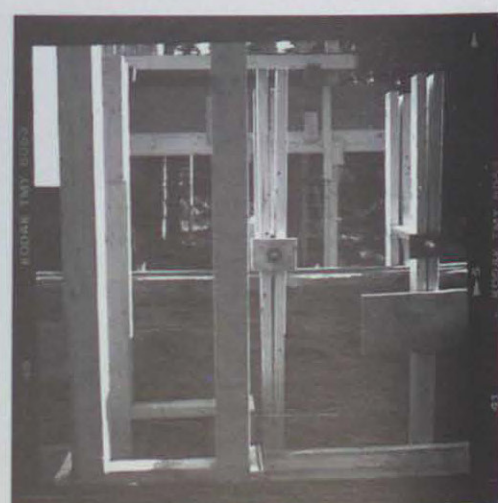
elevation



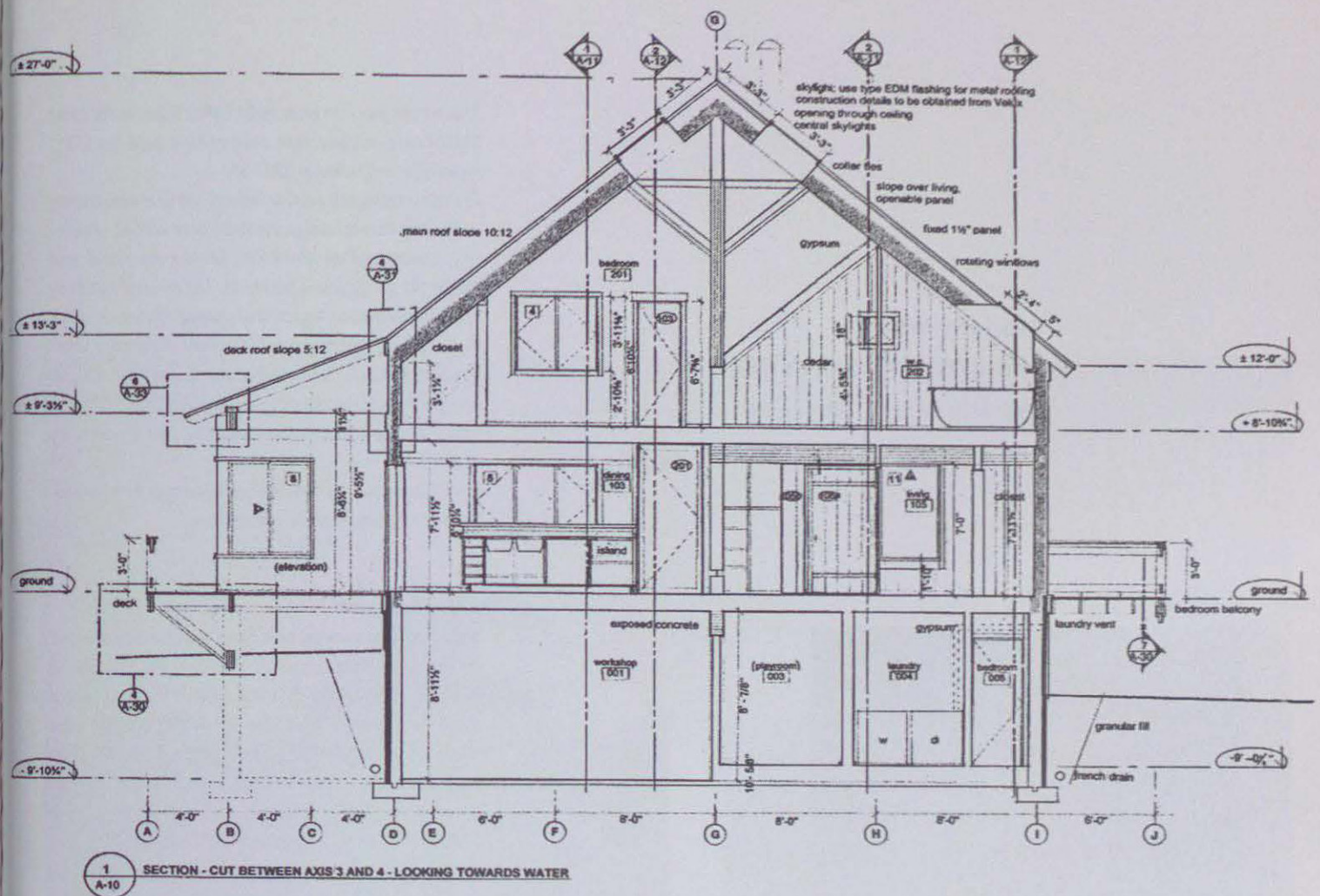
foundation



beam connection and view of cantilevered deck



retaining wall formwork



section



wood framing connection



central column and skylights



view from window